

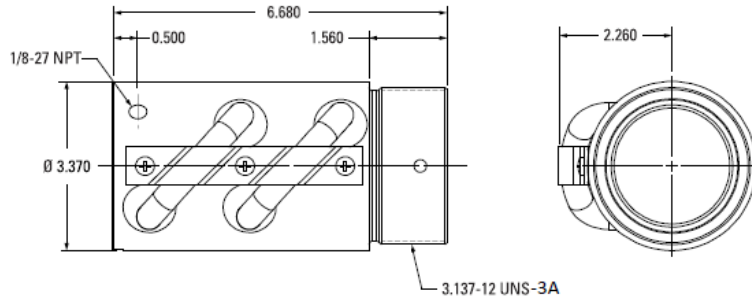
2.250 x 0.500 Ball Screw & Ball Nut (RL2202)



Thomson Standard Parts

Nut: 8122-448-007 (Left Hand)

- Safety Feature: None
- Includes Lube Port
- Wiper Kit included
- Not recommended to use with Nook Screw



Screw: 190-9571/190-9572

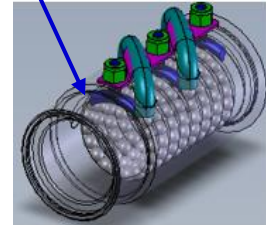
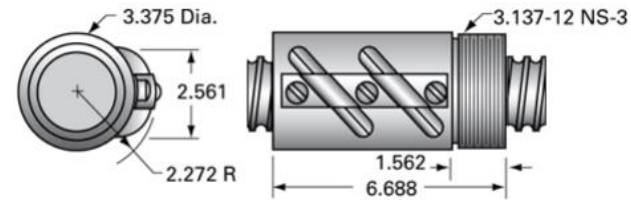
- Screw Material: 1050 Steel
- Standard Finish: Polished & Oiled



Recommended Nook Replacement

Nut: SBN10075 (Left Hand)

- Safety Feature: Solid Deflectors (shown in Blue)
- Optional Lube Port available upon request
- Wiper Kit optional
- Not recommended to use with Thomson Screw



Screw: 2250-0500 SRT (LH)

- Screw Material: 4150 Steel
- Standard Finish: Black Oxide



Key Differences:

- Screw Material: 4150 Steel is a higher grade steel which provides higher wear resistance and strength
- Screw Finish: Black Oxide coating – Matte Black finish that provides more lubricity and rust protection during storage

Nut Assembly:

| FORM/FIT/FUNCTION: | NOOK | THOMSON |
|--------------------|----------------|----------------|
| OD | 3.375 +/- .005 | 3.370 +/- .001 |
| OAL | 6.687 +/- .010 | 6.680 +/- .005 |
| V-THREAD LENGTH | 1.562 +/- .010 | 1.560 +/- .005 |
| DYNAMIC LOAD (lbs) | 21,306 | 21,306 |
| SCREW ROOT Ø | 1.850 | 1.850 |