



Motion Solutions for Clean Energy Applications

www.thomsonlinear.com

 THOMSON[®]
*Linear Motion. **Optimized.***

Thomson is the Choice for Linear Motion.

Thomson linear motion solutions set a worldwide standard for breadth, quality and customizability.

The largest linear actuator range in the market. In addition to our extensive application and engineering expertise, Thomson has the largest, unmatched range of electrical linear actuators, precision linear actuators and screw jacks in the market today. We provide positioning solutions for a vast array of unique applications for dynamic loads up to 11,240 lbf. Thomson understands the critical needs of the clean energy industry and works diligently to provide the most cost-effective solutions available. Our success is driven by:

- Decades of application and engineering expertise
- Robust and reliable products that withstand the harshest environments
- An extensive standard and modified product range
- Custom designs for unique applications

Rugged and reliable. Thomson products suitable for applications in the clean energy industry are rugged and reliable, withstand harsh environments and are protected to IP67.

Changing technologies. Manufacturers are taking a long, hard look at the way they use motion control systems in their equipment. Once dominated by pneumatic and hydraulic systems, machines are now more often designed to use electric linear actuators for the automation of many tasks. They are easier to control, integrate with control systems and are smaller, lighter and cleaner than hydraulic systems – all attributes that brighten a company’s bottom line. Electric linear actuators or screw jacks eliminate:

- Hydraulic pumps, valves and hoses
- Cost and bulk associated with hydraulic systems
- Environmentally hazardous oil and risk of leakage
- High energy consumption of hydraulic systems
- Costly hydraulic reliability issues (contamination)
- Cost and hassle associated with fluid maintenance

At Thomson, customization is standard. Thomson is the industry leader in custom design. Our design flexibility and unique customization expertise give us an advantage to quickly provide customers a cost-effective design that meets their exact requirements.



Solar Energy

High energy prices have fueled double-digit growth in the solar energy industry with continued growth likely in coming years¹. A key factor in deployment of solar panels is the efficiency of the panels and the amount of energy created from the given surface area of a panel.

Solar panel tracking. Tracking the movement of the sun will boost the efficiency and increase output from a given panel by up to 30%. Accurate, trouble-free positioning of the panels is the challenge. The system must be highly rugged and able to withstand wind and weather. It must function reliably and maintenance-free for many years. Thomson linear actuators and screw jacks offer affordable, custom-fitted solutions to these challenges.

- Solar tracking requires actuation solutions which are stiff and will not back-drive in high wind conditions. All Thomson actuators and screw jacks can be equipped with a holding brake that eliminates back-driving.

- Accurate tracking often requires some form of feedback. Most Thomson actuators and screw jack models can be equipped with encoders, resolvers or potentiometers to meet either analog or digital feedback requirements.
- All Thomson actuators and screw jacks are available with adjustable end of stroke limit switches to protect the panel from damage due to overtravel in either direction.
- Panels can require up to 2000 lbf. of force to move in windy conditions, which both actuators and screw jacks can deliver with ease.
- Multiple mounting options are available.
- Actuators and screw jacks require little to no maintenance, making them ideal for solar panel applications.

¹ US Energy Information Administration, Solar Thermal and Photovoltaic Collector Manufacturing Activities 2006, published October, 2007.

Customization

Thomson has a long history of building custom products. A custom tailored solution can be an integrated part of the structure and make assembly quick and easy.

Wind, Rain and Snow

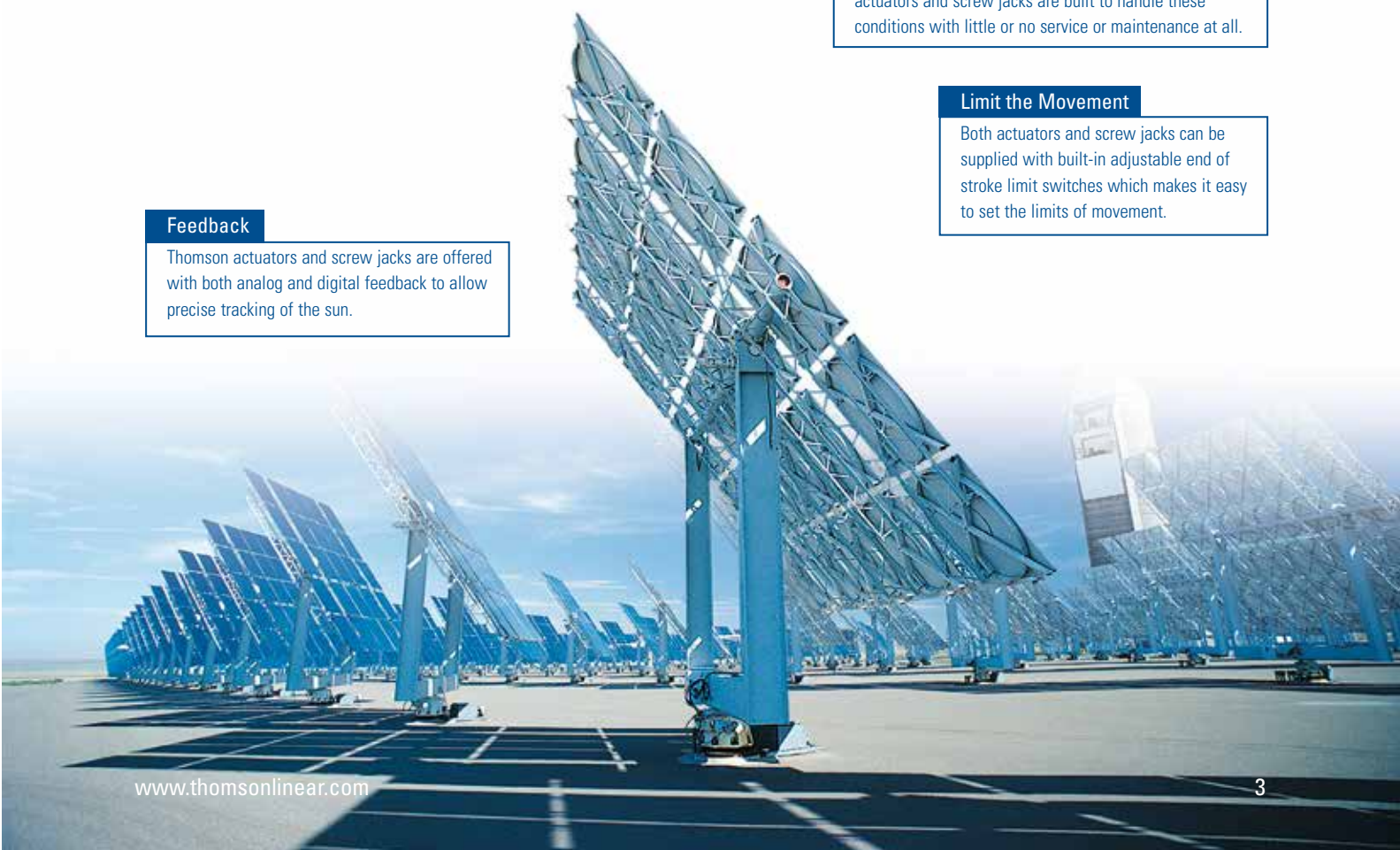
The elements can put stress on a solar panel. Thomson actuators and screw jacks are built to handle these conditions with little or no service or maintenance at all.

Limit the Movement

Both actuators and screw jacks can be supplied with built-in adjustable end of stroke limit switches which makes it easy to set the limits of movement.

Feedback

Thomson actuators and screw jacks are offered with both analog and digital feedback to allow precise tracking of the sun.



Wind Energy

The best wind conditions are often found in locations that are remote or hard to reach – at sea, in the middle of a large field and on hill-tops. Harsh environments require rugged solutions. Reliability is essential and maintenance needs to be minimized. Millions of Thomson actuators operate reliably for years without maintenance in the harshest environments.

Hood lifting and parking brakes. Wind mills are built with top hatches to allow maintenance of large components in the turbine house. These hatches are often too heavy to operate manually. The turbine itself also needs to have a parking brake so that the rotor stays in position for service or when the wind conditions require the mill to stop. Linear actuators or screw jacks are the ideal solution in both cases.

- Actuators and screw jacks are clean compared to hydraulic alternatives. They do not require pumps, pipes, valves and plumbing. There is no risk of oil leakage or need for maintenance.
- Positioning is easy with end of stroke limit switches readily available.
- Installation and operation is simple.
- Thomson actuators or screw jacks have a variety of mounting options available, allowing flexible configuration.

Hood Lift

Heavy service hoods need to be powered to open even if covered by ice making an actuator or screw jack ideal.

Rotor Brake

A rotor braking function can easily be done using an actuator or a screw jack. The brake is used when serviced and when the wind conditions are such that the rotor must be parked.

At Sea, in the Desert or on the Plains

Wind mills are usually placed where wind conditions are ideal. Salt water, ice, sand storms, high humidity, and extreme temperature changes make the environment less than ideal for most electromechanical components. Thomson actuators and screw jacks are available with protection up to IP67 and are tough enough to do the job.

Linear Actuators

For more than 40 years, the dedicated engineers at Thomson have designed linear actuators to provide performance in some of the most demanding applications - vibration, shock, heat, cold, salt spray. Today Thomson has the largest unmatched range of standard and custom electrical linear actuators in the market.



ELECTRAK® PPA

- Strong and versatile heavy duty actuator
- A variety of AC and DC voltage models
- High duty cycle
- Long stroke lengths
- Large range of options
- Trunnion mounting



ELECTRAK 10

- Robust, strong and reliable
- Withstands very harsh environments
- Stainless steel extension tube
- Acme or ball screw models
- A variety of DC voltage models
- Clevis mounting



ELECTRAK LA24

- Robust, strong and reliable
- Withstands very harsh environments
- Aluminium cover tube
- Acme or ball screw models
- A variety of AC voltage models
- Trunnion or clevis mounting



ELECTRAK HD

- Onboard electronics with many optional functions
- Static loads up to 4000 lbf
- Dynamic loads up to 3600 lbf
- Strokes up to 1000 mm
- IP69K / IP66 / IP67 standard
- Rugged design for the harshest applications

Supply voltages	12, 24, 36 VDC and 115, 230, 400 VAC
Speed range	0.004 - 2 inch/sec
Dynamic load, maximum	3600 lbf
Static load, maximum	4000 lbf
Stroke length, maximum	39 inches
Protection degree, maximum	IP69K / IP67
Feedback options	potentiometer or encoder
Limit switch options	external or internal adjustable / internal programmable
Mounting options	clevis, tube mounting or trunnion
Life	designed for 20 years, based on 1 cycle/day
Controls	a large range of controls are available

Precision Linear Actuators

Thomson precision linear actuators are our top-of-the-line actuators. They are built to be strong, robust and reliable, yet very accurate and flexible. They are available in three different sizes, each with many different mechanical configurations, motor alternatives and mounting options. Thomson precision linear actuators have the reliability, accuracy and functional flexibility to suit almost any application with guaranteed trouble-free operation in the toughest environments.



ECT SERIES

- Very robust, strong and reliable
- Withstands harsh environments
- Stainless steel extension tube
- High precision ball screw drive
- 100% duty cycle
- 3-phase AC motor or AC servo motor
- High repeatability



T SERIES

- Combines durability, performance and ease of use
- Slide guide bushings perfect for tough applications
- Large selection of factory-engineered options and accessories
- Ball screw drive, hard chromed steel extension tube
- IP65 protection class and other washdown options

Motor alternatives	24VDC, 400 VAC 3 phase and AC-servo as standard (others on request)
Speed range	0.04 - 118 inch/sec (3000 mm/sec)
Dynamic load, maximum	13400 lbf / 60000 N
Static load, maximum	17900 lbf / 60000 N
Stroke length, maximum	79 inches
Protection degree, maximum	IP65
Feedback options	encoder, resolver, smart feed back device (SFD)
Limit switch options	magnetic sensors
Mounting options	clevis, trunnion or mounting feet
Controls	various alternatives available (motor dependent)

Thomson Screw Jacks

The Thomson screw jack product line provides reliability and versatility in a variety of applications. Technically mature, and with an easy-to-mount, rectangular housing, it can easily be extended to form wide-area jack systems with the help of its wide range of accessories.



- Models with moving or rotating screw available
- Models available that can provide thrust to operate large numbers of solar panels simultaneously
- Can easily be synchronized with other units to drive multiple rows of solar panels
- Very stiff system to provide highly accurate positioning
- Slow extension speeds - down to 0.0001 inch extension per each revolution input
- Very low maintenance
- Optional limit switches for end of stroke protection
- Variety of motor flange adapters to allow customer preferred motors
- Designed with high quality components and materials to be robust and offer long and trouble-free operation under the toughest conditions

Supply voltages	motor and drive dependent
Dynamic load, maximum	11,240 lbf
Limit switch options	external adjustable
Mounting options	clevis or trunnion
Warranty	up to 3 years
Controls	various alternatives available (motor dependent)

USA, CANADA and MEXICO

Thomson
203A West Rock Road
Radford, VA 24141, USA
Phone: 1-540-633-3549
Fax: 1-540-633-0294
E-mail: thomson@thomsonlinear.com
Literature: literature.thomsonlinear.com

EUROPE

United Kingdom

Thomson
Office 9, The Barns
Caddsdow Business Park
Bideford, Devon, EX39 3BT
Phone: +44 1271 334 500
E-mail: sales.uk@thomsonlinear.com

Germany

Thomson
Nürtinger Straße 70
72649 Wolfschlugen
Phone: +49 7022 504 403
Fax: +49 7022 504 405
E-mail: sales.germany@thomsonlinear.com

France

Thomson
Phone: +33 243 50 03 30
Fax: +33 243 50 03 39
E-mail: sales.france@thomsonlinear.com

Italy

Thomson
Via per Cinisello 95/97
20834 Nova Milanese (MB)
Phone: +39 0362 366406
Fax: +39 0362 276790
E-mail: sales.italy@thomsonlinear.com

Spain

Thomson
E-mail: sales.esm@thomsonlinear.com

Sweden

Thomson
Estridsväg 10
29109 Kristianstad
Phone: +46 44 24 67 00
Fax: +46 44 24 40 85
E-mail: sales.scandinavia@thomsonlinear.com

ASIA

Asia Pacific

Thomson
E-mail: sales.apac@thomsonlinear.com

China

Thomson
Rm 805, Scitech Tower
22 Jianguomen Wai Street
Beijing 100004
Phone: +86 400 606 1805
Fax: +86 10 6515 0263
E-mail: sales.china@thomsonlinear.com

India

Thomson
c/o Portescap India Pvt Ltd
1 E, first floor, Arena House
Road no 12, Marol Industrial Area,
Andheri (E), Mumbai 400093 India
E-mail: sales.india@thomsonlinear.com

Japan

Thomson
Minami-Kaneden 2-12-23, Suita
Osaka 564-0044 Japan
Phone: +81 6 6386 8001
Fax: +81 6 6386 5022
E-mail: csjapan@scgap.com

South Korea

Thomson
3033 ASEM Tower (Samsung-dong)
517 Yeongdong-daero
Gangnam-gu, Seoul, South Korea (06164)
Phone: + 82 2 6001 3223 & 3244
E-mail: sales.korea@thomsonlinear.com

SOUTH AMERICA

Brazil

Thomson
Av. João Paulo Ablas, 2970
Jardim da Glória - Cotia SP - CEP: 06711-250
Phone: +55 11 4615 6300
E-mail: sales.brasil@thomsonlinear.com

www.thomsonlinear.com

200806-02 7/2019 KB

Specifications are subject to change without notice. It is the responsibility of the product user to determine the suitability of this product for a specific application. All trademarks property of their respective owners. ©2019 Thomson Industries, Inc.

 **THOMSON**[®]

Linear Motion. Optimized.