

## Electrak® Throttle Actuator

The Next Generation of Throttle Control Technology

# Introducing the Thomson Electrak® Throttle Actuator

Transforming throttle control through innovative design

Thomson has taken the rugged, dependable features of the E050 Electrak® actuator and added capabilities making the throttle actuator an ideal solution for industrial vehicles where throttle control is required. It offers:

- Trusted performance
- Simplified installation
- Space-saving design
- Reduced environmental impact
- Minimal maintenance

Simplify installation and increase operator safety and productivity with the space-saving design and electromechanical interface, allowing engine speed controls to be placed in ergonomic positions.

Reduce the environmental impact of a vehicle by utilizing on-board electronic options such as the analog position feedback sensor, electronic limit switches, and CANBUS communication (SAE J1939), to automatically control engine RPM based upon engine demand to increase productivity while reducing fuel consumption, noise and emissions.

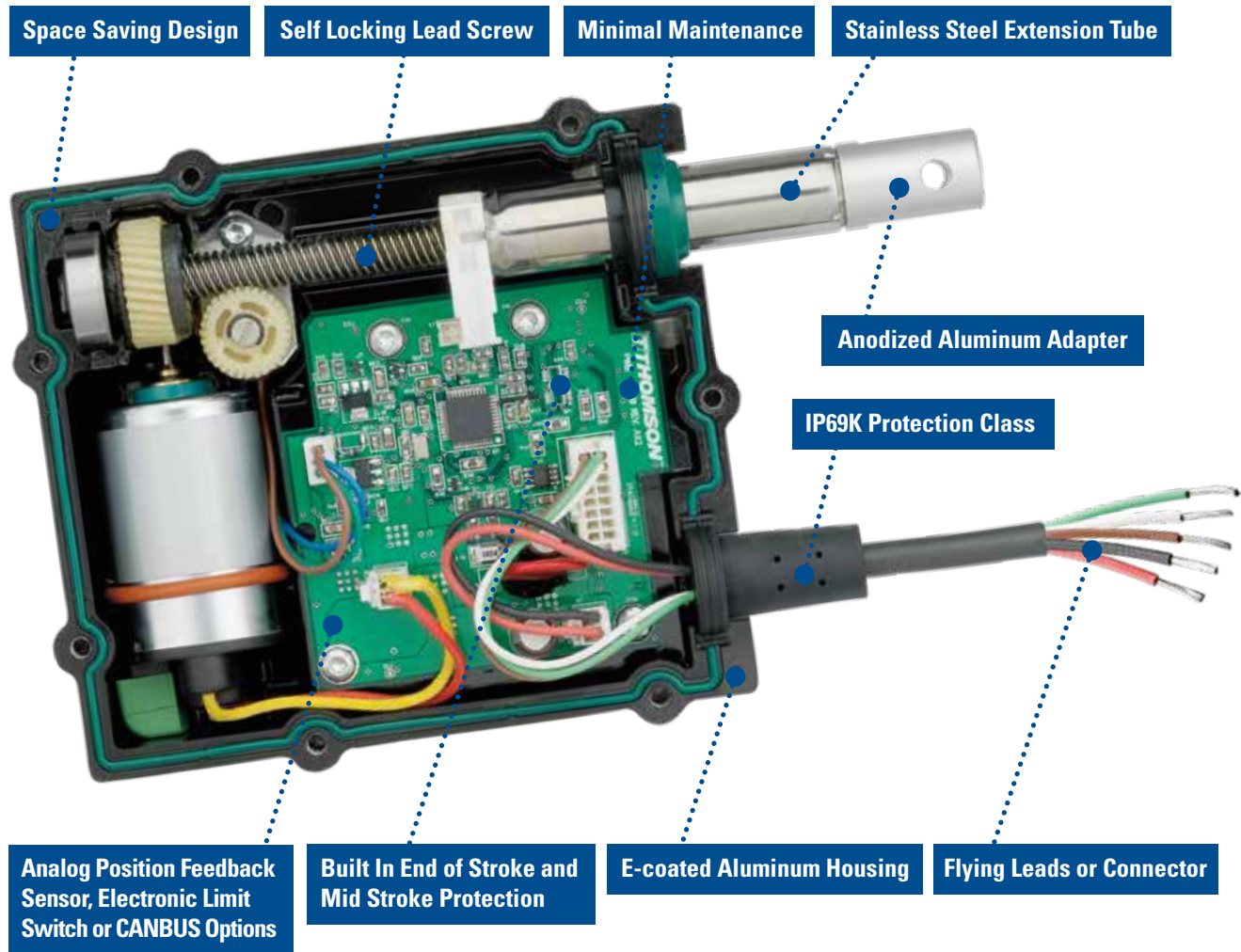
The rugged aluminum housing offers IP69K/IP67 sealing and is e-coated for corrosion resistance to make the throttle actuator virtually maintenance-free.

Need something extra? The Electrak® Throttle actuator can be tailored to your specific application requirements and Thomson engineers are always available to help select an actuator for your application needs.



## The Electrak® Throttle Actuator at a Glance

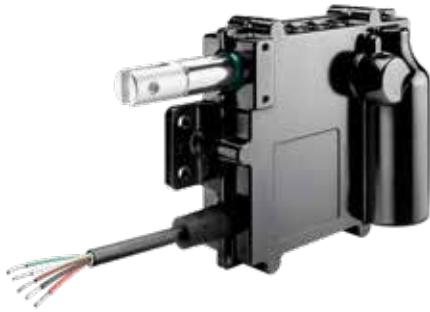
The Electrak® Throttle Actuator was developed to be the most robust, reliable, and versatile actuator for throttle control applications. Enjoy a simpler and more efficient vehicle design process with the following product innovations:



### Applications

- Agricultural vehicles
- Marine applications
- Street sweepers
- Auxiliary engines
- Mobile generators
- Construction equipment
- Military and rescue vehicles
- Trucks
- Fork lifts
- Pump trucks
- Garden and forestry equipment
- Mass transport vehicles
- Mining equipment
- Industrial automation

# Specifications



## Standard Features and Benefits

- Designed for industrial applications
- Rugged aluminum housing with IP69K/IP67 sealing
- E-coated housing for corrosion resistance
- Minimal maintenance
- Integrated electronic options
- High end features at a low cost
- Integrated mounting holes

## General Specifications

Parameter	Electrak Throttle
Screw type	worm
Internally restrained	yes
Manual override	no
Dynamic braking with option CN with option NP, FN, FP	yes no
Holding brake	no (self locking)
End of stroke protection	yes
Mid stroke protection	yes
Motor protection with temperature rating S with temperature rating E	auto reset thermal switch no
Motor connection	flying leads or Deutsch connector
Certificates	CE, RoHS
Options	<ul style="list-style-type: none"> <li>• extended temperature range</li> <li>• adapter orientation</li> <li>• right angle cable exit</li> <li>• analog position feedback sensor</li> <li>• internal end of stroke limit switches</li> <li>• CANBUS SAE J1939</li> </ul>

## Performance Specifications

Parameter	Electrak Throttle
Maximum load, dynamic / static [N (lbf)] ET••-084 <sup>(1)</sup> ET••-174	45 (10) / 90 (20) 130 (30) / 260 (60)
Speed, no load / at max. load [mm/s (in/s)] ET••-084 <sup>(1)</sup> ET••-174	96 (3.7) / 83 (3.3) 48 (1.9) / 37 (1.45)
Available input voltages [VDC]	12, 24
Current draw, max. <sup>(2)</sup> [A] 12 VDC models 24 VDC models	4 2
Operating temperature, min [°C (F)]	- 40 (-40)
Operating temperature, max [°C (F)] ET•••••••S ET•••••••E	85 (185) 125 (257)
Full load duty cycle @ 25°C <sup>(3)</sup> [%]	50
End play, maximum [mm (in)]	1.5 (0.06)
Restraining torque [Nm (lbf-in)]	0
Motor cable lead cross section [mm <sup>2</sup> (AWG)]	0.8 (18)
Motor cable length [mm (in)]	165 (6.5)
Protection class	IP69K, IP67
Operational life [cycles]	500,000
Retracted length [mm (in)]	184.7 (7.27)
Stroke length [mm (in)]	50.8 (2)
Weight [kg (lbs)]	1.11 (2.5)
Analog feedback sensor linearity [± %]	1

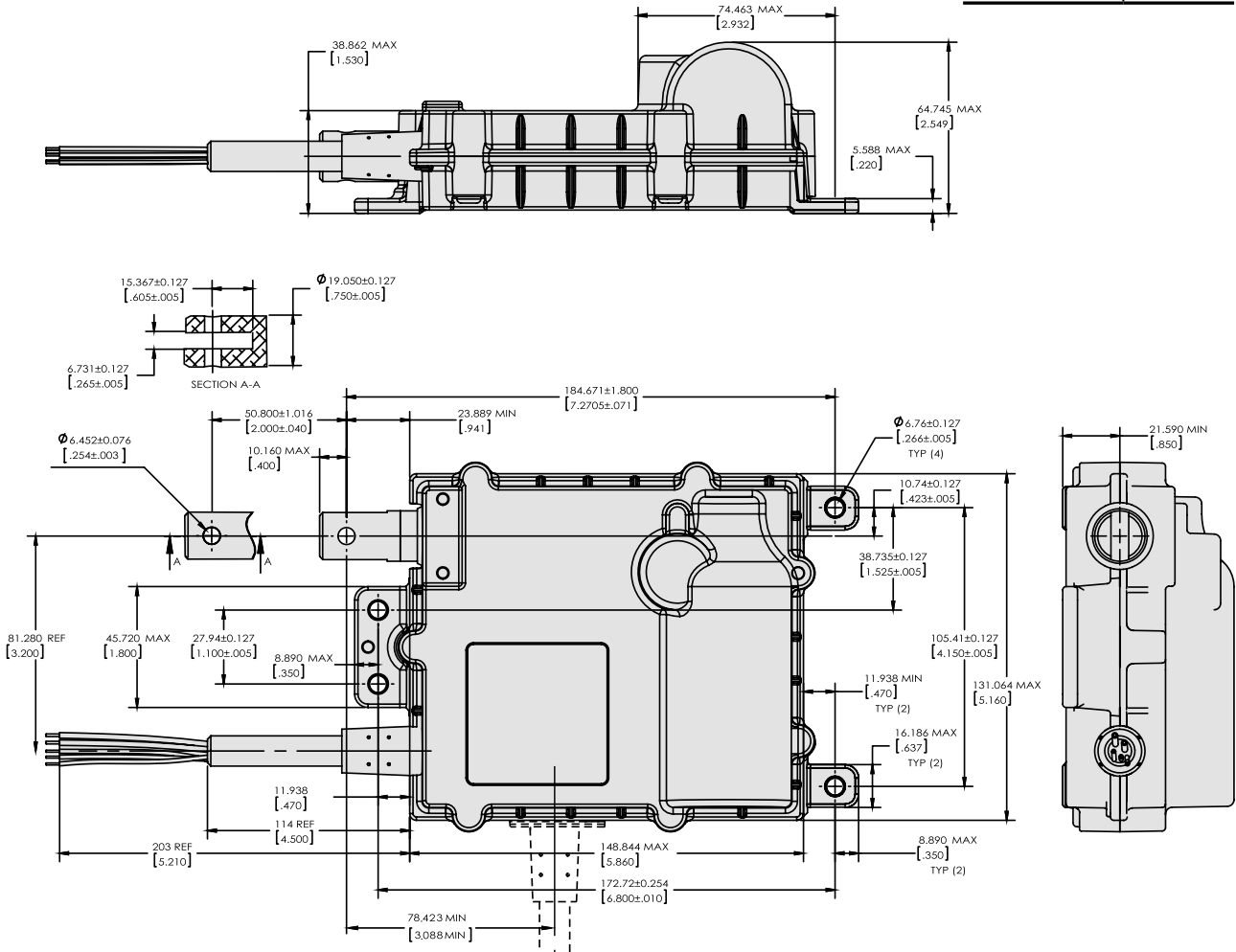
<sup>(1)</sup> The ET••-084 (high speed version) can only be ordered in combination with operating temperature rating E.

<sup>(2)</sup> Max. current draw ratings do not include motor inrush current. Typical inrush current values are 12 A at 12 VDC and 6 A at 24 VDC.

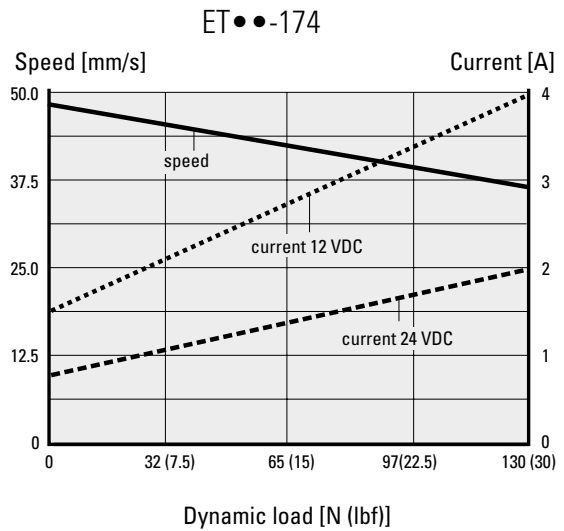
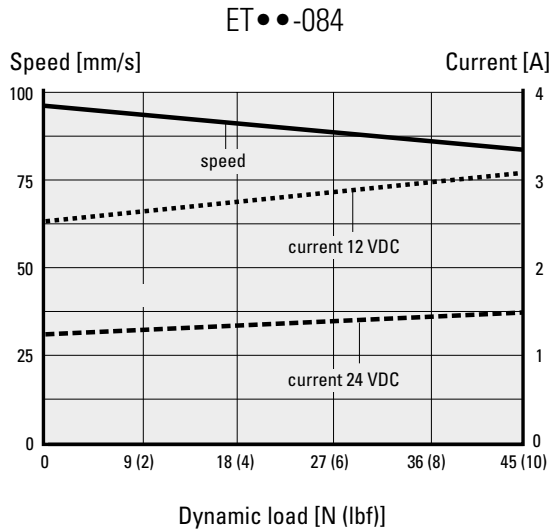
<sup>(3)</sup> For all models and load ranges.

# Dimensions and Performance Diagrams

Dimensions	Projection
METRIC [INCH]	



## Performance Diagrams



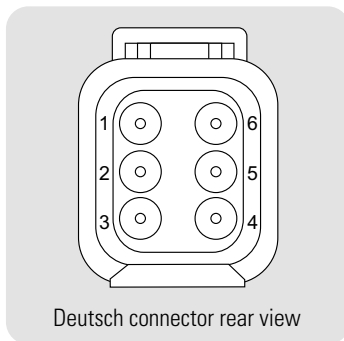
# Electrical Installation

## Cable and Connector Installation

Connect the actuator according to the table below. Actuator will extend if connected as in the table, shift polarity between red (pin 1) and black (pin 3) leads and it will retract. Mating Deutsch connector kit can be ordered from Thomson (P/N 9100-448-021). Note: Connector pin 2 is not used, but contains a sealing plug.

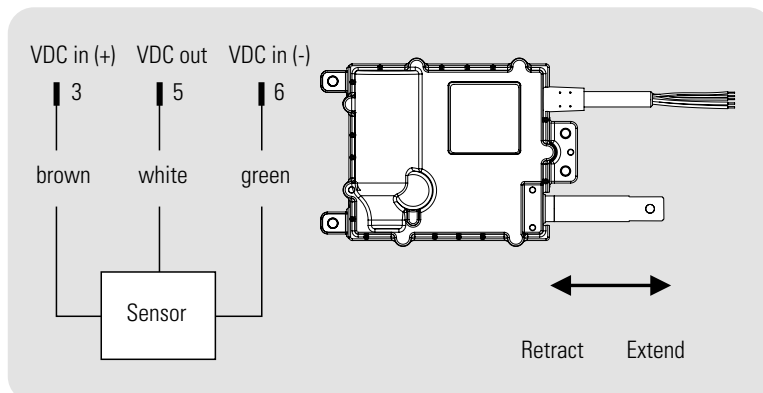
Option name and order key code	Lead color or Deutsch DTM04-6P connector pin number				
	Red (1)	Black (3)	Brown (4)	White (5)	Green (6)
<b>Analog position feedback sensor (NP)</b>	Motor (+)	Motor (-)	VDC in (+)	VDC out	VDC in (-)
<b>End of stroke limit switches (FN)</b>	Motor (+)	Motor (-)	-	-	-
<b>Analog position feedback sensor and limit switches (FP)</b>	Motor (+)	Motor (-)	VDC in (+)	VDC out	VDC in (-)
<b>CANBUS SAE J1939 (CN)</b>	Power (+)	Power (-)	CAN High	CAN Shield*	CAN Low

\* Not required to connect.



## Analog Position Feedback Sensor Installation Data

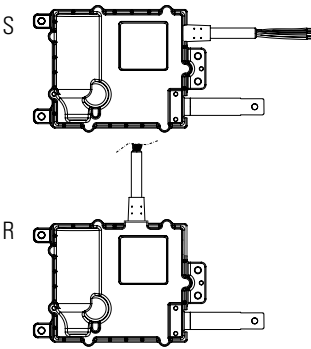
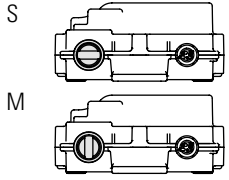
Brown (pin 3) and green (pin 6) are connected to a voltage source. When extending the actuator the voltage will increase between green (pin 6) and white (pin 5).



### Sensor Specifications

Input voltage, max. (VDC in)	[VDC]	32
Output voltage (VDC out) at fully retracted	[VDC]	< 5 % VDC in > 75% VDC in
Output voltage (VDC out) at fully extended	[VDC]	
Max. output current	[mA]	1
Linearity	[± %]	1

# Ordering Key

Ordering Key							
Position	1	2	3	4	5	6	7
Example	<b>ET12-</b>	<b>084-</b>	<b>S</b>	<b>S</b>	<b>NP</b>	<b>1</b>	<b>S</b>
<p>1. Actuator type and supply voltage                      ET12- = Electrak Throttle, 12 VDC                      ET24- = Electrak Throttle, 24 VDC</p> <p>2. Max. dynamic load and speed version                      084- = 45 N (10 lbf), high speed <sup>(1)</sup>                      174- = 130 N (30 lbf), standard speed</p> <p>3. Harness orientation                      S = parallel to adapter                      R = rotated 90° in housing</p> 			<p>4. Temperature rating                      S = standard: -40 (-40) to +85 (+185) °C (F)                      E = high temperature: -40 (-40) to +125 (+257) °C (F)</p> <p>5. Control option                      NP = analog position feedback sensor                      FN = end of stroke limit switches                      FP = analog position feedback sensor and end of stroke limit switches                      CN = CANBUS SAE J1939</p>			<p>6. Connection options                      1 = flying leads                      2 = Deutsch DTM04-6P connector</p> <p>7. Adapter options                      S = standard adapter orientation                      M = adapter rotated 90°</p> 	

(1) Can only be ordered with high temperature rating (code E in position 4). Note that there is no thermal switch to protect the motor on the high temperature rated models.

## **USA, CANADA and MEXICO**

Thomson  
203A West Rock Road  
Radford, VA 24141, USA  
Phone: 1-540-633-3549  
Fax: 1-540-633-0294  
E-mail: [thomson@thomsonlinear.com](mailto:thomson@thomsonlinear.com)  
Literature: [literature.thomsonlinear.com](http://literature.thomsonlinear.com)

## **EUROPE**

### **United Kingdom**

Thomson  
Office 9, The Barns  
Caddsdawn Business Park  
Bideford, Devon, EX39 3BT  
Phone: +44 (0) 1271 334 500  
E-mail: [sales.uk@thomsonlinear.com](mailto:sales.uk@thomsonlinear.com)

### **Germany**

Thomson  
Nürtinger Straße 70  
72649 Wolfschlugen  
Phone: +49 (0) 7022 504 403  
Fax: +49 (0) 7022 504 405  
E-mail: [sales.germany@thomsonlinear.com](mailto:sales.germany@thomsonlinear.com)

### **France**

Thomson  
Phone: +33 (0) 243 50 03 30  
Fax: +33 (0) 243 50 03 39  
E-mail: [sales.france@thomsonlinear.com](mailto:sales.france@thomsonlinear.com)

### **Italy**

Thomson  
Via per Cinisello 95/97  
20834 Nova Milanese (MB)  
Phone: +39 0362 366406  
Fax: +39 0362 276790  
E-mail: [sales.italy@thomsonlinear.com](mailto:sales.italy@thomsonlinear.com)

### **Spain**

Thomson  
E-mail: [sales.esm@thomsonlinear.com](mailto:sales.esm@thomsonlinear.com)

### **Sweden**

Thomson  
Estridsväg 10  
29109 Kristianstad  
Phone: +46 (0) 44 24 67 00  
Fax: +46 (0) 44 24 40 85  
E-mail: [sales.scandinavia@thomsonlinear.com](mailto:sales.scandinavia@thomsonlinear.com)

## **ASIA**

### **Asia Pacific**

Thomson  
E-mail: [sales.apac@thomsonlinear.com](mailto:sales.apac@thomsonlinear.com)

### **China**

Thomson  
Rm 2205, Scitech Tower  
22 Jianguomen Wai Street  
Beijing 100004  
Phone: +86 400 6661 802  
Fax: +86 10 6515 0263  
E-mail: [sales.china@thomsonlinear.com](mailto:sales.china@thomsonlinear.com)

### **India**

Thomson  
c/o Fortive India Pvt. Ltd.  
Unit No. FF A 07  
Art Guild House, A Wing, 1st Floor, L.B.S Marg  
Kurla – West, Mumbai – 400070 India  
Phone: +0091 22 6249 5043  
Email: [sales.india@thomsonlinear.com](mailto:sales.india@thomsonlinear.com)

### **Japan**

Thomson  
Minami-Kaneden 2-12-23, Suita  
Osaka 564-0044 Japan  
Phone: +81-6-6386-8001  
Fax: +81-6-6386-5022  
E-mail: [csjapan@scgap.com](mailto:csjapan@scgap.com)

### **South Korea**

Thomson ROA  
704 ASEM Tower (Samsung-dong)  
517 Yeongdong-daero, Gangnam-gu  
Seoul, S. Korea, Zip Code: 06164  
Phone: +82 2 6917 5048 & 5049  
Fax: +82 2 528 1456 & 1457  
E-mail: [sales.korea@thomsonlinear.com](mailto:sales.korea@thomsonlinear.com)

## **SOUTH AMERICA**

### **Brazil**

Thomson  
Av. Tamboré, 1077  
Barueri, SP - 06460-000  
Phone: +55 11 3616-0191  
Fax: +55 11 3611 1982  
E-mail: [sales.brasil@thomsonlinear.com](mailto:sales.brasil@thomsonlinear.com)